

BROOMHEADS

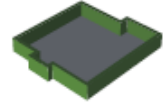
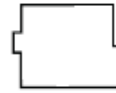
☆ BUSINESS SALES ☆ RESIDENTIAL LETTINGS

☆ RESIDENTIAL SALES ☆ ENERGY ASSESSORS

COMMERCIAL ENERGY PERFORMANCE (EPC) PRICE GUIDE

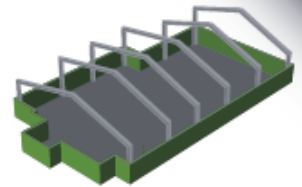
Area upto 50 sqm

£250



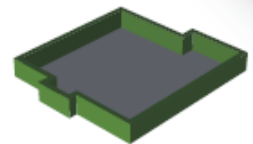
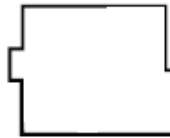
Retail & Industrial Framed

£250 + £0.25 per m²



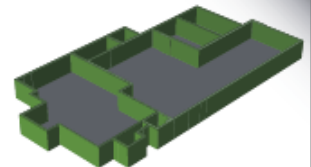
Open Area

£250 + £0.50 per m²



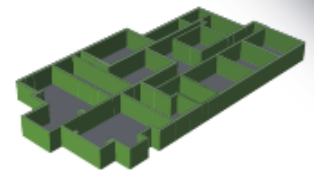
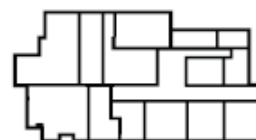
Open Plan (with Ancillary Rooms)

£250 + £0.75 per m²



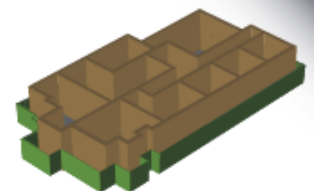
Heavily Partitioned Spaces

£250 + £1.00 per m²



Hotels & B&Bs

£250 + £40 per bedroom



These indicative prices exclude VAT and are dependent on material provided being accurate. Call for quote 01253 629029

274 Church Street
Blackpool FY1 3PZ
Tel (01253) 292 222
Fax 0871 246 1000
Open 7 Days
mail@broomheads.com

4 Westlodge
Broadpool Lane
Hambleton FY6 9AG
Tel (01253) 700 718
Fax 0871 246 1003
hambleton@broomheads.com

56 Lancaster Road
Knott End FY6 0AQ
Tel (01253) 813 814
Fax 0871 246 1004
Open 7 Days
knottend@broomheads.com

Established
1981

www.Broomheads.com



propertyfinder.com

rightmove.co.uk
The UK's number one property website

thinkproperty.com



Broomheads Financial Services is a trading style of Broomheads which is an Appointed Representative of Personal Touch Financial Services Ltd which is authorised and regulated by the Financial Services Authority
Principal: J P Broomhead Registered in England & Wales